



## **PUSH-UP BLADE INSTALLATION GUIDE**

Congratulations on your purchase of a Push-up Blade from Hatfield Manufacturing!

Follow these steps to install your blade on your tractor

Note: Your blade kit was designed to fit your KUBOTA MX5400 tractor, but the install process is virtually identical across most open-station/cab makes and models.

### **Kit Includes:**

(1x) Bolt Kit

(1x) Main Push-up Blade  
Assembly

(1x) Under Belly Support

(1x) Front Bumper

(1x) Rear Base Plate (For 1 implement)

(1x) Valve Box (If cab)

(1x) Valve Stand (If no cab)

**Before beginning install process READ ALL WARNINGS,  
SAFETY PRECAUTIONS, AND SAFETY STICKERS  
Refer to website for maintenance, bolts, and hydraulics information**

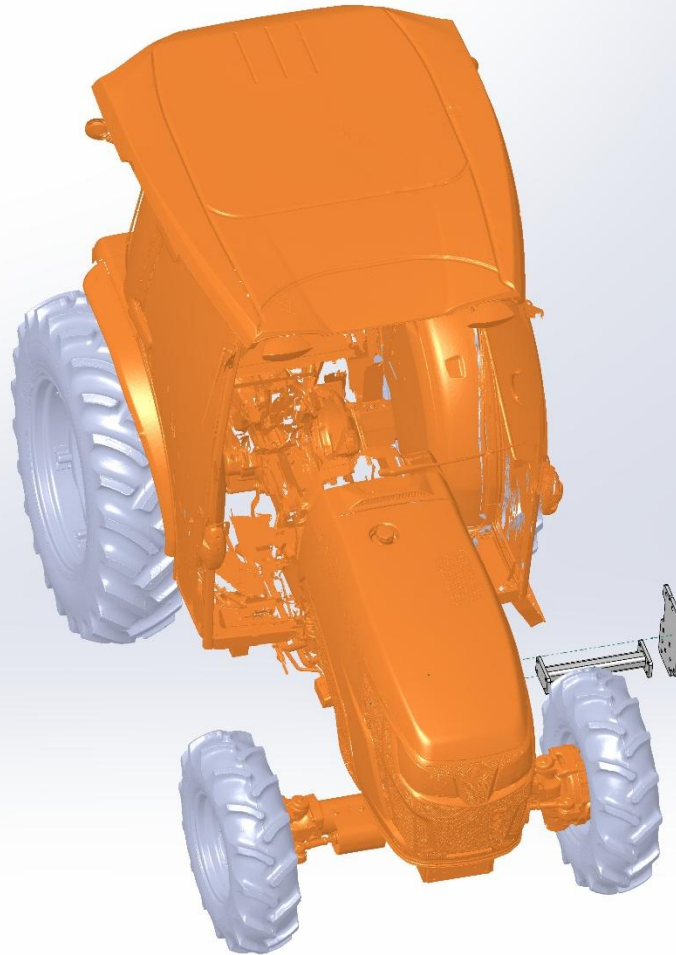
## Step One:

Locate the 4 bolt holes we will be using on the right-hand side, left-hand side, and front bumper of the Tractor. They may have bolts or plastic inserts in them that will need to be removed. No drilling should be required. Also, check the fit of the bolts provided prior to moving the main blade assembly into place.



## Step Two:

If you have one implement install the left base plate and under support not fully tightening bolts.

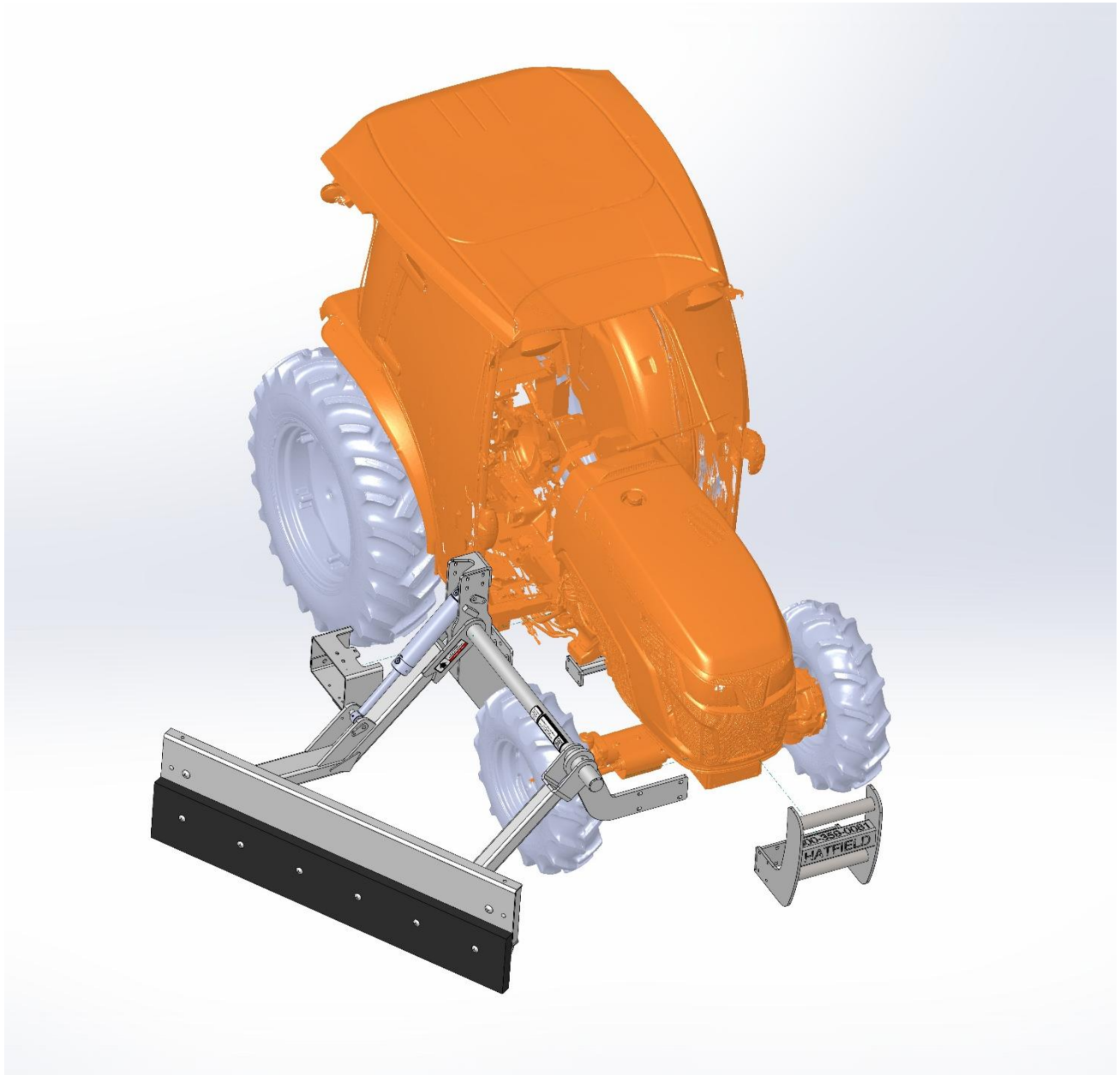


## Step Three:

If 1 implement bring the Main Blade Assembly up to the tractor and attach them loosely to the side and the front of the tractor as shown. The brush guard attaches to the front using the same bolts, it can also be added now. Don't fully tighten while mounting the implements.

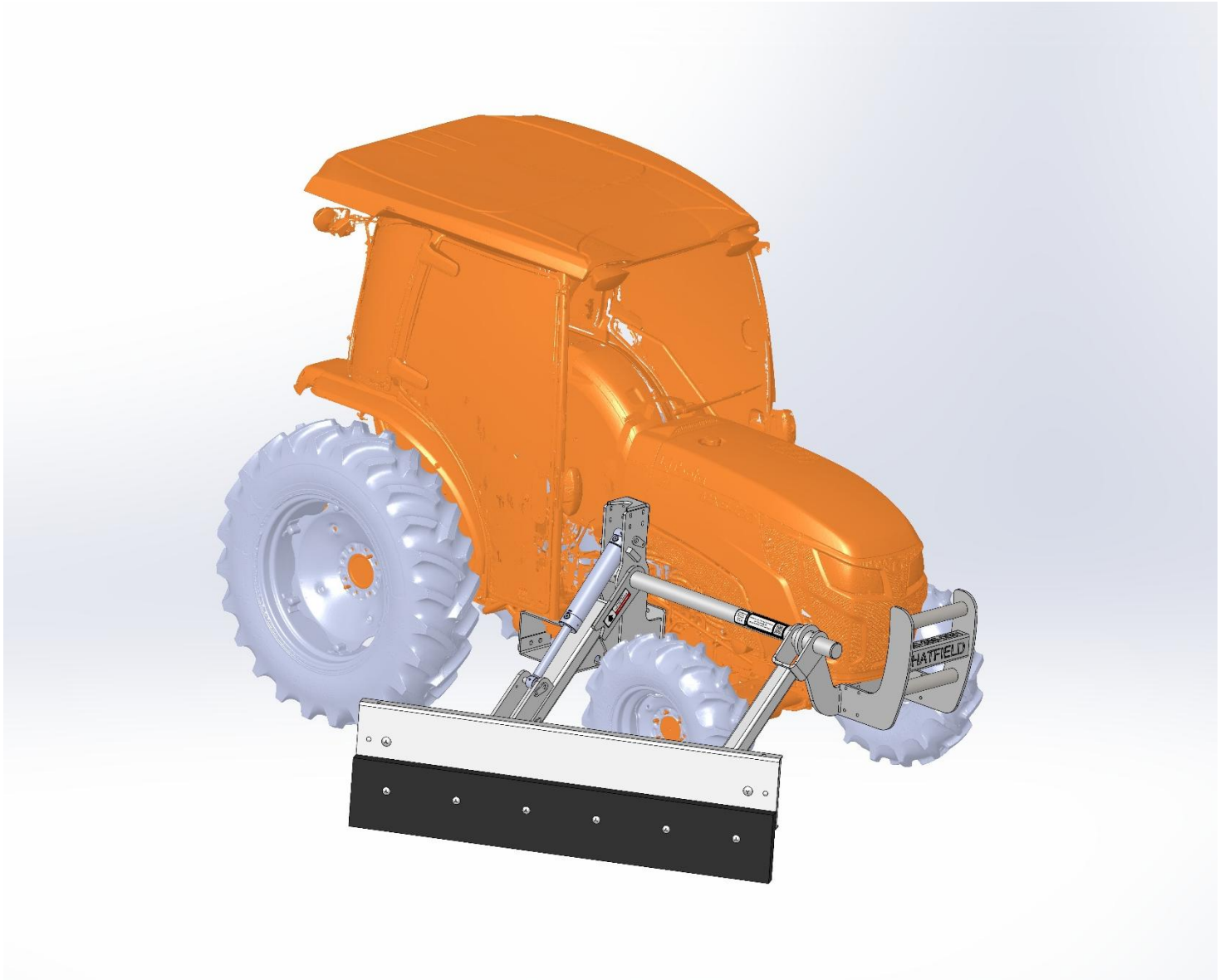
If 2 implements bring the right-side implement first, then left-side implement. Attach the underbelly support to the rear uprights. The brush guard attaches to the front using the same bolts, it can also be added now. Don't fully tighten while mounting the implements.

If an open-station model attach the valve stand during this time. Finally attach valve tray.

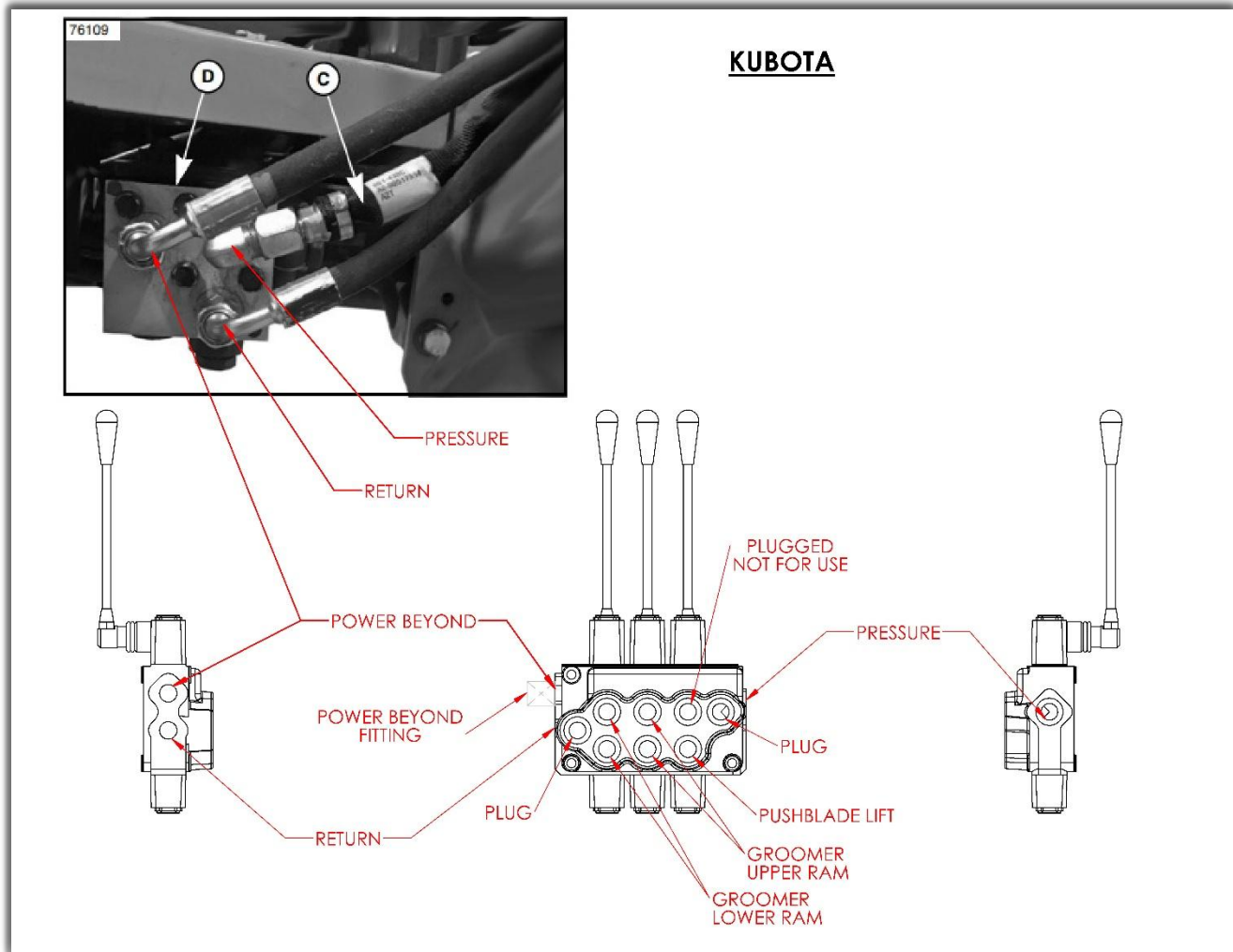


## Step Four:

Attach hydraulic cylinder at both ends if it isn't already and tighten everything down.



## Step Five:



A-Fitting B-Fitting, Return Oil Line C-Fitting, Pressure Oil Line D-Fitting, Power Beyond E-Fitting F-Fitting

1. Remove protective plugs (if equipped) from oil lines.
2. Install return oil line fitting (B) to fitting (A).
3. Install power beyond oil line fitting (D) to fitting (E).
4. Install pressure oil line fitting (C) to fitting (F). Tighten oil line fittings to specification.

### Specification

Oil line fittings

(C-F) Torque.....37 N-m (27 lb-ft)

5. Fill hydraulic fluid to proper level. (Refer to tractor Operator's manual)