



PUSH-UP BLADE INSTALLATION GUIDE

Congratulations on your purchase of a Push-up Blade from Hatfield Manufacturing!

Follow these steps to install your blade on your tractor

Note: Your blade kit was designed to fit your JOHN DEERE 4 SERIES tractor, but the install process is virtually identical across most open-station/cab makes and models.

Kit Includes:

(1x) Bolt Kit

(1x) Main Push-up Blade
Assembly

(1x) Under Belly Support

(1x) Front Bumper

(1x) Rear Base Plate (For 1 implement)

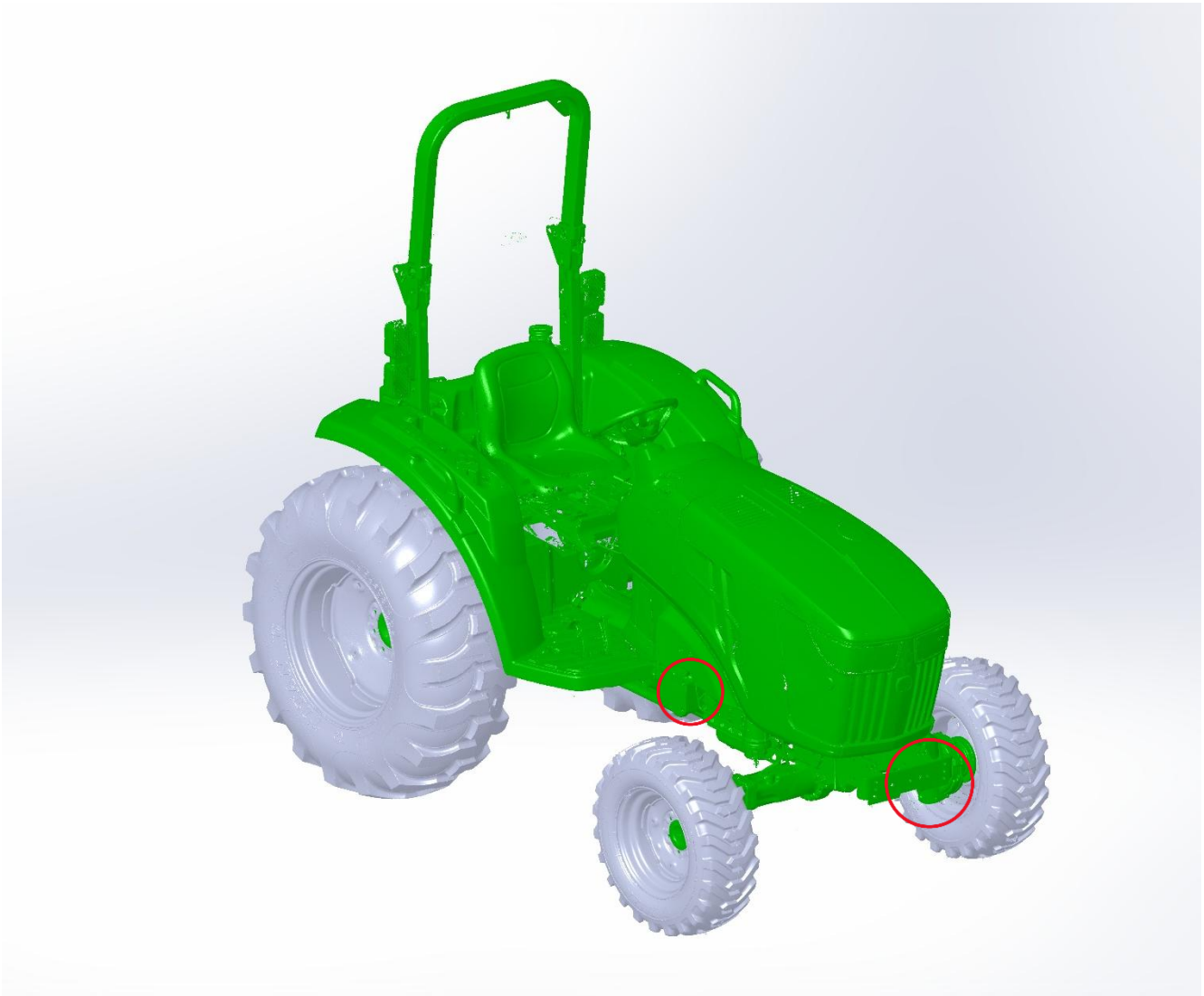
(2x) Mount Spacers (If no cab)

(1x) Valve Stand (If no cab)

**Before beginning install process READ ALL WARNINGS,
SAFETY PRECAUTIONS, AND SAFETY STICKERS
Refer to website for maintenance, bolts, and hydraulics information**

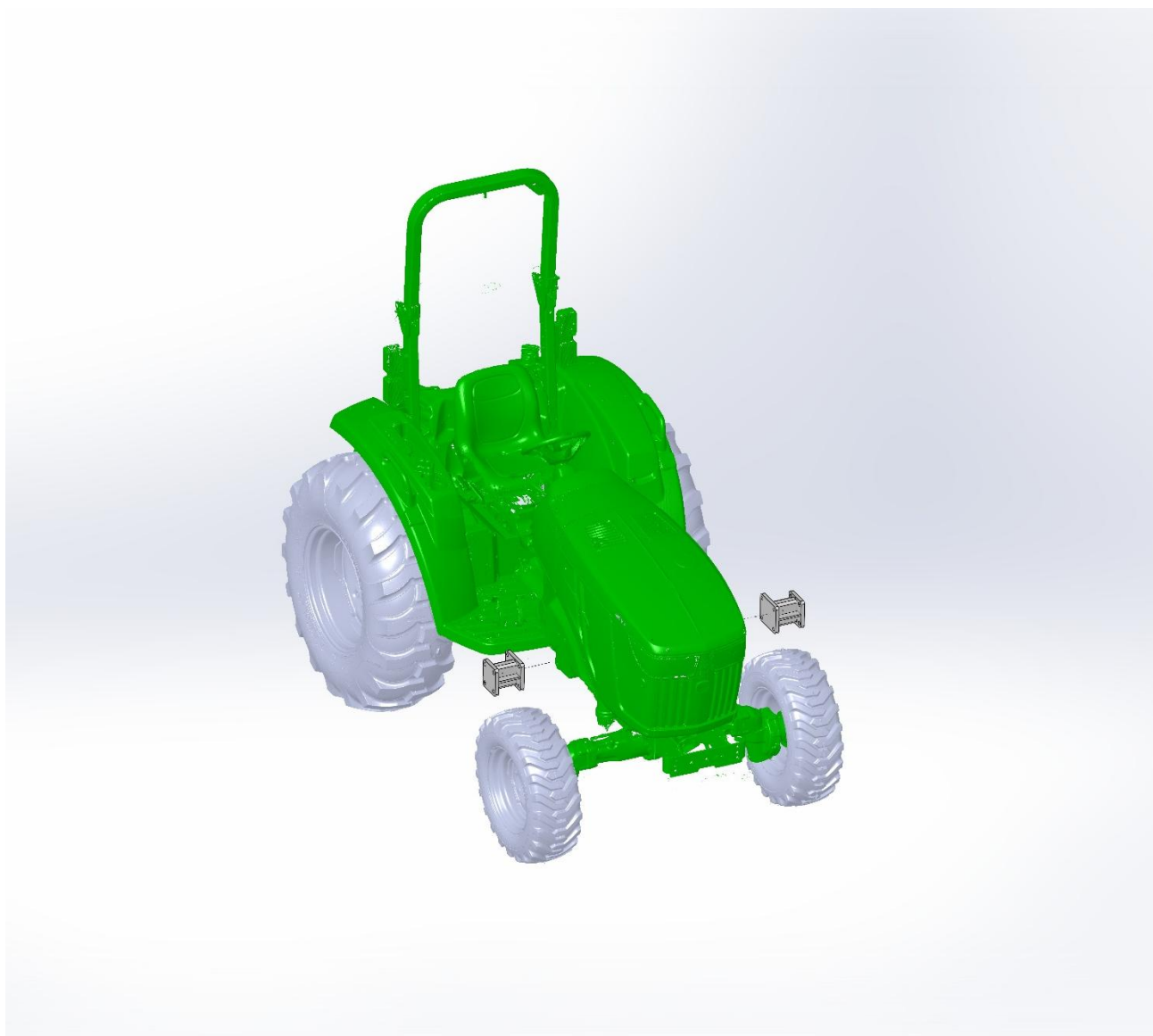
Step One:

Locate the 4 bolt holes we will be using on the right-hand side, left-hand side, and front bumper of the Tractor. They may have bolts or plastic inserts in them that will need to be removed. No drilling should be required. Also, check the fit of the bolts provided prior to moving the main blade assembly into place.



Step Two:

If your model does not have a cab install the provided Mount Spacers to both sides of Tractor.

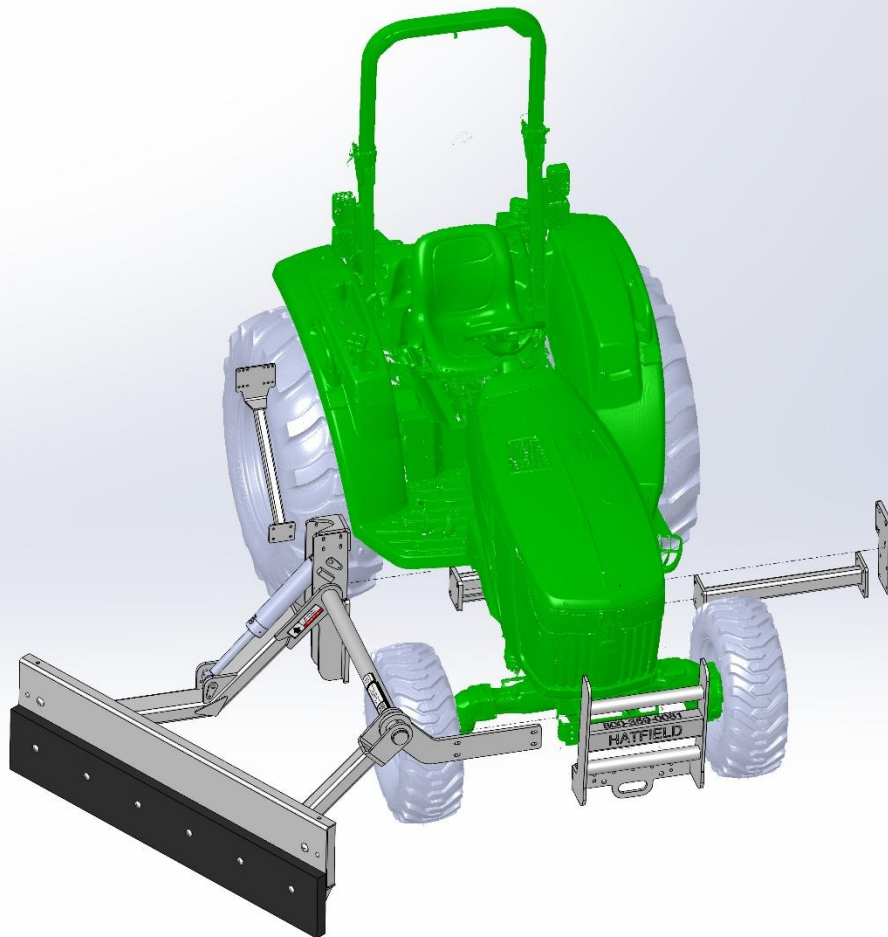


Step Three:

If 1 implement attach the left base plate and underbelly support first. Then bring the Main Blade Assembly up to the tractor and attach them loosely to the side and the front of the tractor as shown. The brush guard attaches to the front using the same bolts, it can also be added now. Don't fully tighten while mounting the implements.

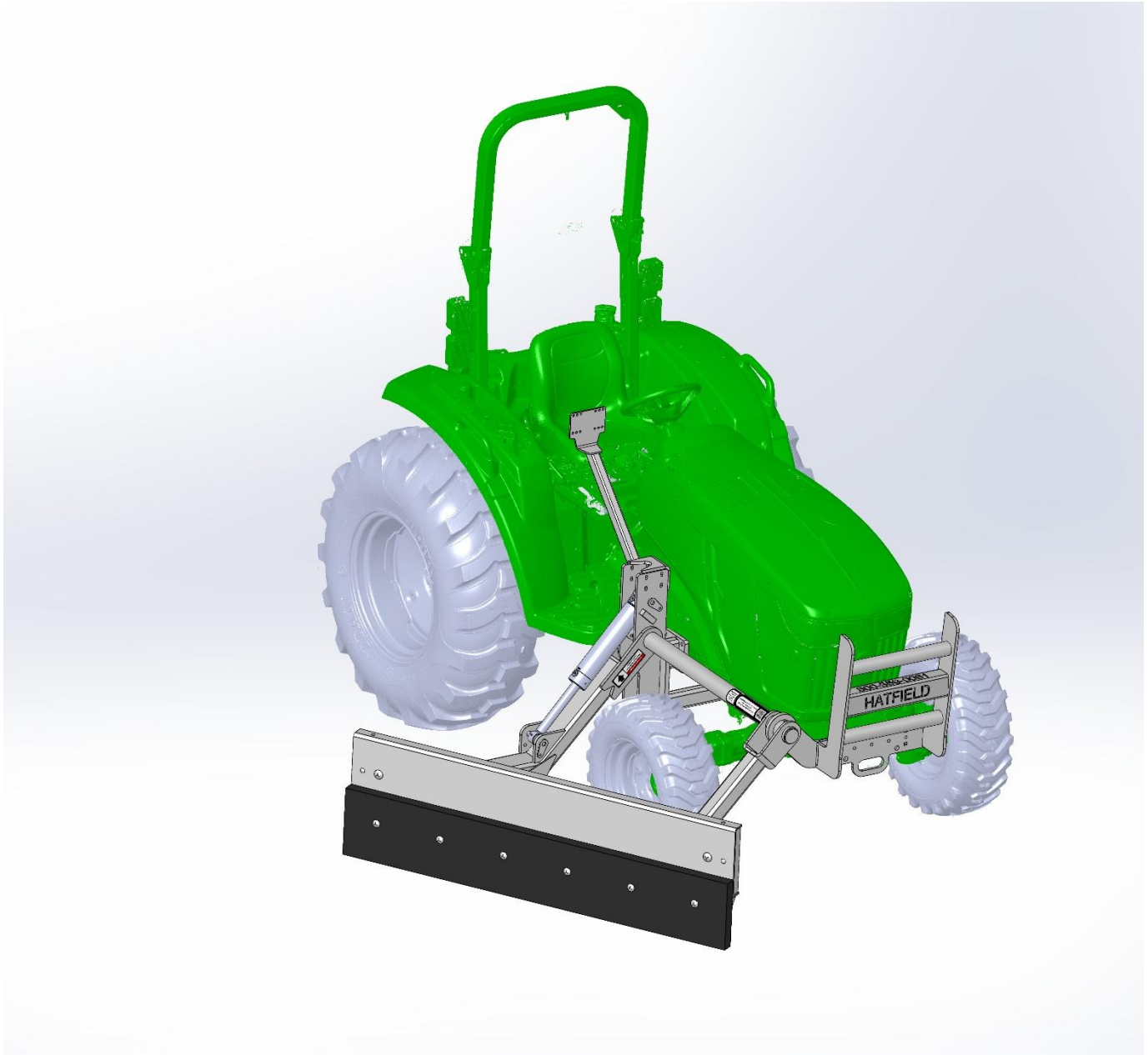
If 2 implements bring the right-side implement first then left-side implement. Attach the underbelly support to the rear uprights. The brush guard attaches to the front using the same bolts, it can also be added now. Don't fully tighten while mounting the implements.

If an open-station model attach the valve stand during this time.



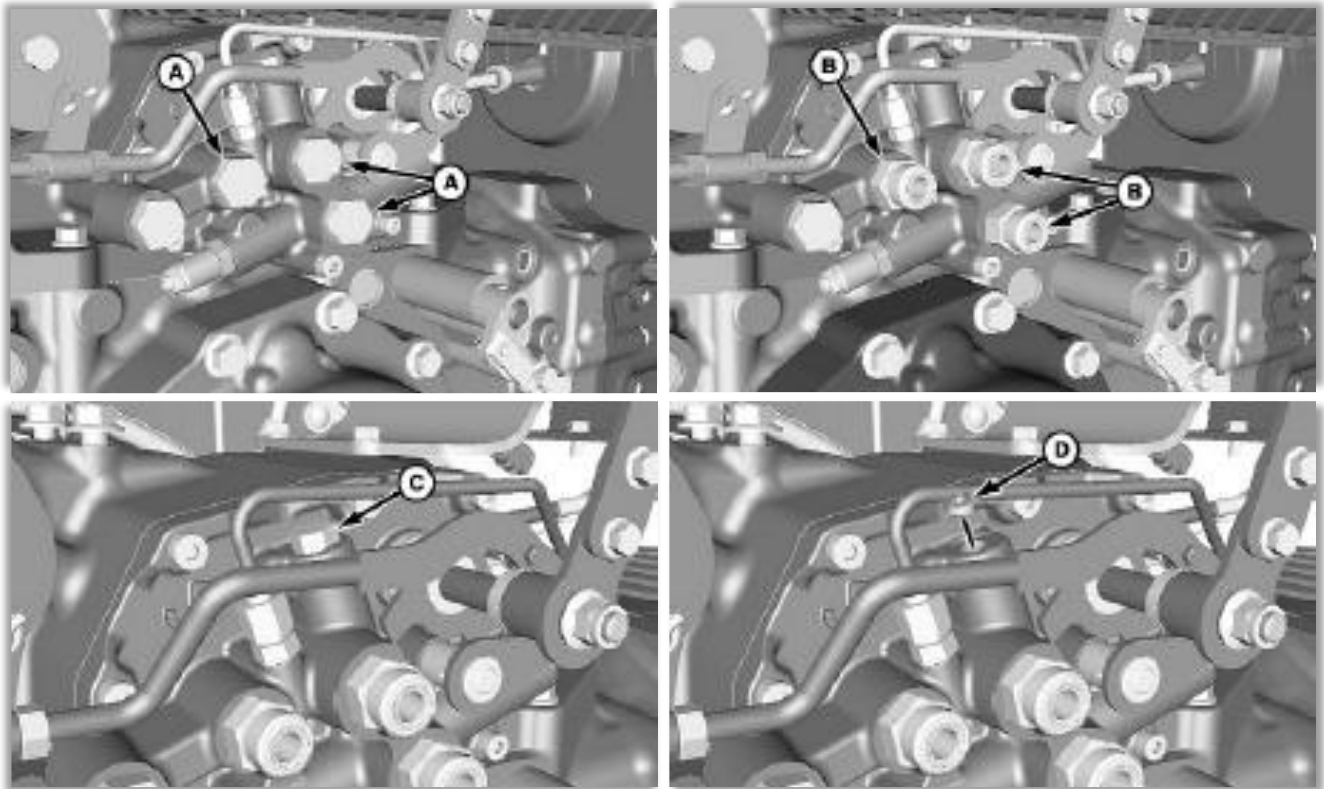
Step Four:

Attach hydraulic cylinder at both ends if it isn't already and tighten everything down.



Step Five:

Hydraulic Connections will vary by Model. The photos on this page may differ from your install. As with any tractor hydraulic remote, if it functions “backwards” just switch the lines.

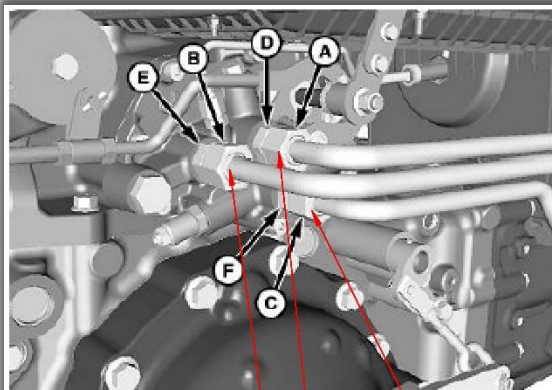


A-Oil Line, Drain (2 used) B-Oil Line, Return (2 used) C-Oil Line, Pressure (2 used) D-Fittings (3 used)

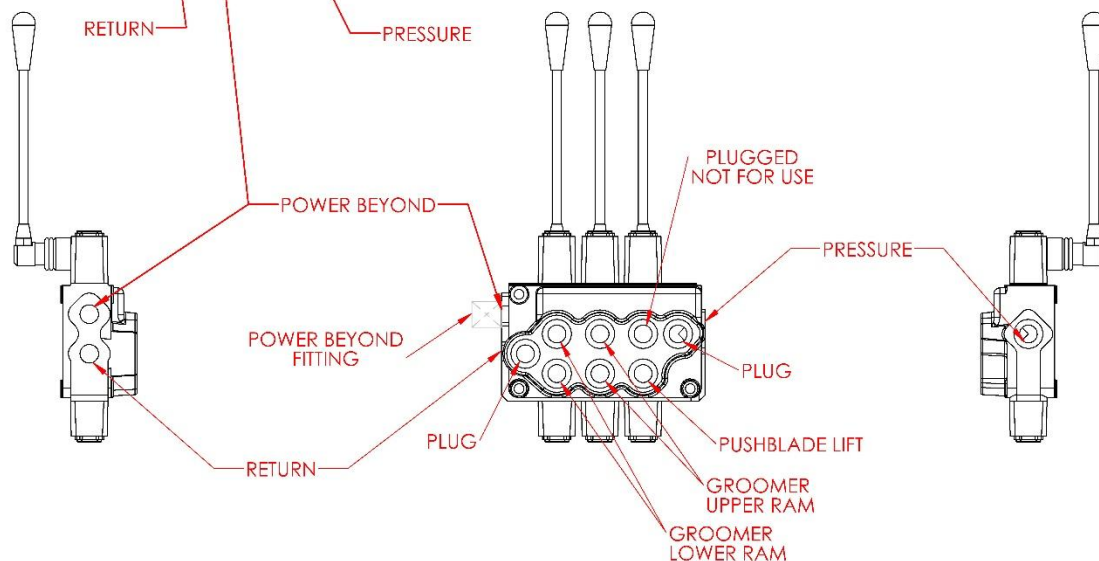
IMPORTANT: Loader will not function if pipe plug (D) is not installed.

NOTE: Right-hand side rear tire and fender

1. Remove and discard plugs (A).
2. Install fittings (B) as shown and tighten to specification.
3. Remove and retain plug (C).
4. Install pipe plug (D) into internal tractor housing located inside hole as shown.
5. Install previously removed plug (C) and tighten to specification.



JOHN DEERE 4 SERIES



A- Fitting, Power Beyond B-Fitting, Return Oil Line C- Fitting, Pressure Oil Line D-Fitting E- Fitting F-Fitting

1. Remove protective plugs (if equipped) from oil lines.
2. Install return oil line fitting (B) to fitting (E).
3. Install power beyond oil line fitting (A) to fitting (D).
4. Install pressure oil line fitting (C) to fitting (F). Tighten oil line fittings to specification.

Specification

Oil line fittings

(C-F) Torque.....37 N-m (27 lb-ft)

5. Fill hydraulic fluid to proper level. (Refer to tractor Operator's manual)